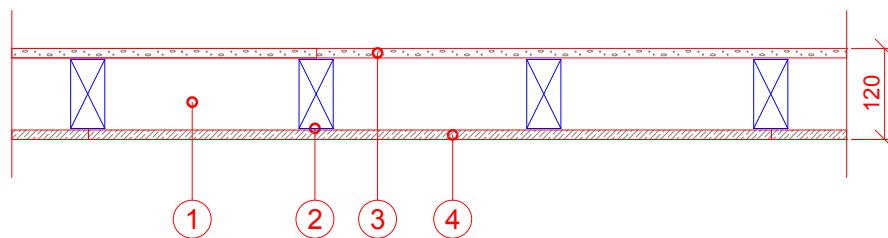



Brandklass: EI30, REI15
Max vägghöjd: 4000mm



1. Kantregel 45x95 mm
2. Väggregel 45x95 mm, c 450 mm
3. 12,5 mm Gyproc Gipsskivor
4. 12,5 mm Glasroc H GHOE13 Ocean Ergo Våtrumsskivor

| BET | ANT | ÄNDRINGEN AVSER | DATUM | SIGN |
|---|-----|-----------------|-------|------|
| HANDLING ÅÄMMDD | | | | |
| PROJEKT | | | | |
| | | | | |
| | | | | |
| | | | | |
|  | | | | |
| <small>GYPROC AB Box 153, Kalmareden 50 SE 740 24 Bästa Tel: +46(0)171-4 15480 Fax: +46(0)171-4 15450 www.gyproc.se</small> | | | | |
| RITAD/KONSTR AV | | EH | | |
| DATUM | | ANSVARIG | | |
| 2011-10-14 | | Teknisk Support | | |
| GT(5V) 95/95 (300) 1V-1 M0 | | | | |
| SKALA | | RITN. NR: | | |
| 1:10 | | | | |